



Viewings

Viewings by arrangement only.
Call 0114 2666300 to make an appointment.

Vendors Comments

Add text here

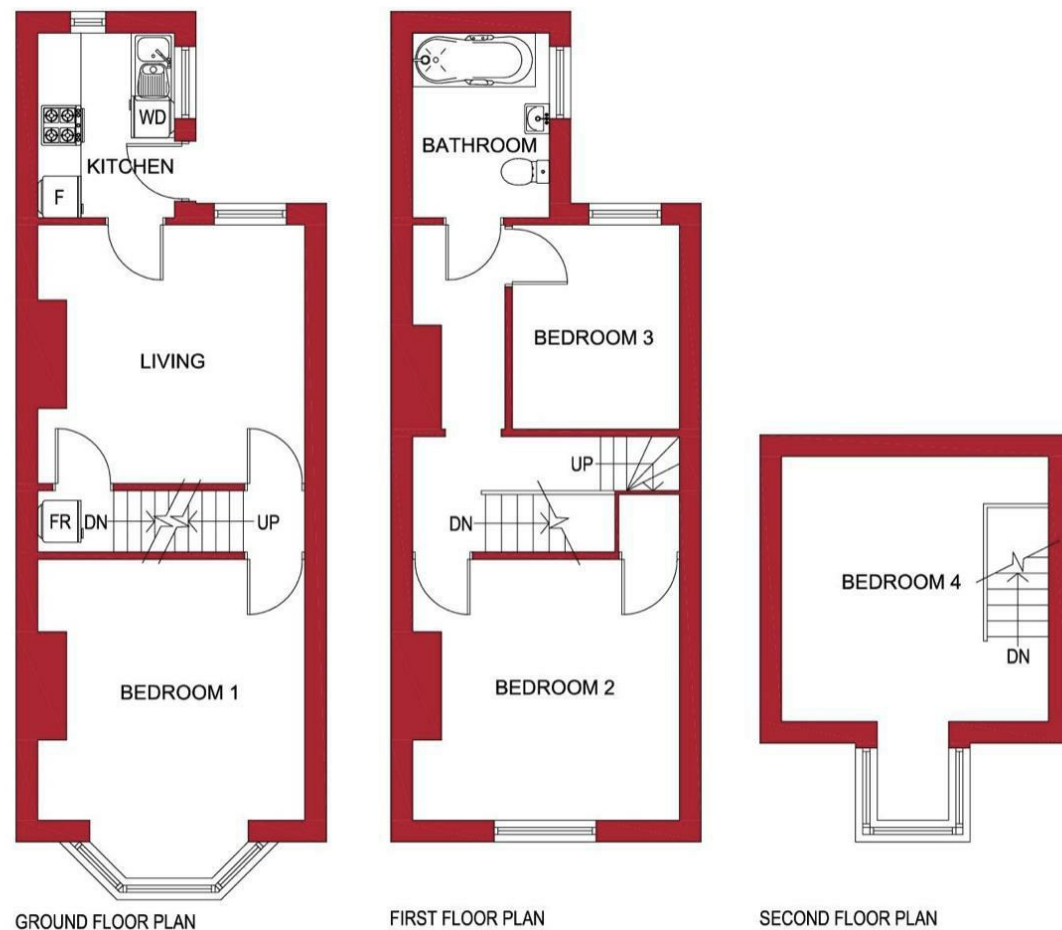
Energy Efficiency Rating		Current	Potential
Very energy efficient - lower running costs			
(92 plus) A			86
(81-91) B			
(69-80) C			
(55-68) D		58	
(39-54) E			
(21-38) F			
(1-20) G			
Not energy efficient - higher running costs			
England & Wales		EU Directive 2002/91/EC	

JC SALES & LETTINGS

Tel: 0114 483 0038

E-mail: sales@jc-salesandlettings.com

Website: www.jc-salesandlettings.com



6 Harland Road, Sheffield, S11 8NB

£1,126 Per month

- Student: £80 per person per week
- Bills included option available at £106 per person per week
- Bills included option includes gas, electricity, fibre internet, TV licence and water bills
- Driveway for off road parking
- Situated just off Ecclesall Road
- Perfectly placed for Sheffield Hallam University
- Available for a group of 4
- Separate living room and kitchen
- Four good sized bedrooms
- EPC Grade D

6 Harland Road, Sheffield S11 8NB

*** STUDENT *** £80 PER PERSON PER WEEK *** BILLS INCLUDED OPTION AVAILABLE AT £106 PER PERSON PER WEEK (Includes: Gas, electricity, fibre internet, water and TV licence) *** AVAILABLE FOR A GROUP OF 4 ***
*** OFF ROAD PARKING ***

A WELL LOCATED, four bedroom END TERRACE property, located just off ECCLESALL ROAD. Ideal for STUDENTS studying at SHEFFIELD HALLAM UNIVERSITY and close to an abundance of local amenities.

In brief the accommodation comprises: lounge, separate kitchen and large double bedroom to the ground floor. To the first floor are two double bedrooms and a bathroom/WC. To the second floor is a large double bedroom. There is a driveway to the side of the property, providing space for off road parking if required.

An early viewing is highly recommended to avoid disappointment!
EPC Grade D.



Council Tax Band: B

